

Winnowing (After Jade & Lexie) is a collection of images compiled while researching *Less*. The images' subject matter is composed of poems collaboratively written with neural-network AI, found text from a folk children's story, illustrations from Victorian-era cookbooks, found images from WWII housewife ephemera, kitchen experimentation, eBay finds, and books. In their amalgamation, these images document a kind of artistic research, sieving chaff from grain in an attempt to find meaning.






She has killed the spiders.
She has made the tea and toast.
She has combed her husband's beard,
held him while he screamed,
✿:✿ while he slept,
while he dreamed.



Meech Boakye
Meatwife, 2022
archival digital print
8" x 10" unframed
edition of 3



She said,
“Rope, rope, hang butcher!
Butcher will not kill ox.
Ox will not drink water.
Water will not put out fire.
Fire will not burn stick.
Stick will not beat dog. 
Dog will not bite pig. 
Pig will not jump over the stile,
And I shall not get home to-night.”

The rope said, 
“No, I will not hang butcher.”

Meech Boakye
Rope, hang butcher!, 2022
archival digital print
10" x 8" unframed
edition of 3

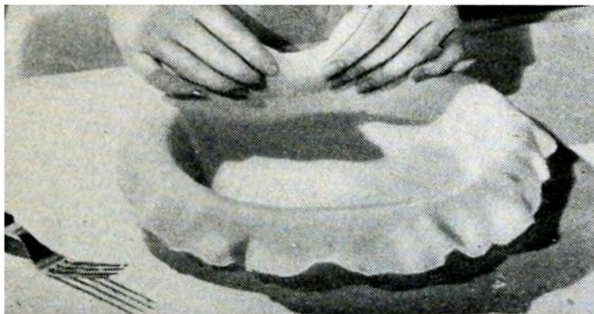
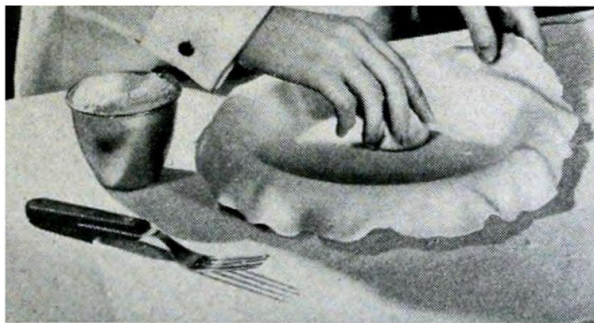


I have made all the noises
and sounds I was asked to make.



warmly,
MEAT WIFE

Meech Boakye
Meatwife II, 2022
archival digital print
8" x 10" unframed
edition of 3




Meech Boakye
Spry Pie Crust, 2022
archival digital print
6" x 4" unframed
edition of 3



A pink case with a picture of a woman on the front of the case. The case reads "Eileen". Inside there are cigarettes that smell like dried roses.

Meech Boakye
Eileen, 2022
archival digital print
4" x 6" unframed
edition of 3

clean your desk, wash the **DISHES**, clean the floor, wash your clothes, wash your toes, change the baby's diaper, finish the report, correct the typos, mend the fence, keep the customer happy, throw out the stinking garbage, watch out don't put things in your nose, what shall I wear,  I have no sox, pay your bills, don't litter, save string, wash your hair, change the sheets, go to the store, I'm out of perfume, say it again— he doesn't understand, seal it again—it leaks, go to work, this art is dusty, clear the table, call him again, flush the **Toilet**, stay young.

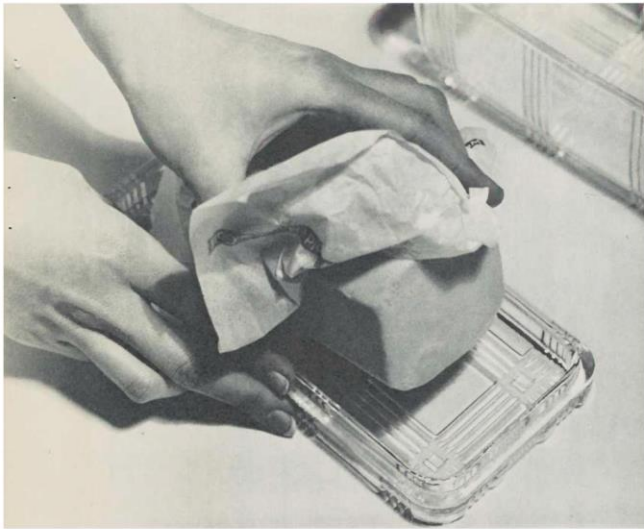
Meech Boakye
Maintenance (Care), 2022
archival digital print
8" x 10" unframed
edition of 3



Meech Boakye
Gelatin & glycerine bioplastic test, 2022
archival digital print
6" x 4" unframed
edition of 3



Meech Boakye
A new way to tie hawk's claws, 2022
archival digital print
6" x 4" unframed
edition of 3



Meech Boakye
Save Waste Fats, 2022
archival digital print
4" x 6" unframed
edition of 3

STRETCHING THE MEAT DOLLAR

Most of us are looking our Food Dollar right in the eye and having it glare right back at us. At first we are a bit disconcerted, to say the least. Then if we are smart we start doing some really good planning. Some of the best planning has to do with using, and attractively, every bit of food we buy. "bits" we are apt to overlook are the morsels of meat left clinging to the bone when we have sliced away the roast or the ham. This time lets "use up" that ham bone and make a pot of savory baked beans.

Put the ham bone in a sizable kettle. Cover with water and simmer until the bits of meat almost fall from the bone. (If you have a pressure sauce pan 20-25 at 10 lb. pressure will do it.)

Remove ham and bone and put 1 lb. washed pea or marrow beans in the liquor - bring back to the boil and let stand an hour. This works almost as well as soaking overnight.

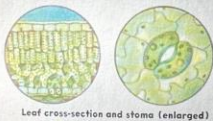
Cook beans in a pressure sauce pan will take 20-25 minutes in a pressure sauce

Place be

10

PARTS OF A TREE
LEAVES

Leaves make food from water and carbon dioxide, using the energy of sunlight. Chlorophyll makes this energy transformation possible.



Leaf of a Tuliptree

Inside a leaf, at the top, is a sheet of "palisade" cells which absorb sunlight. Guard cells around stomata (openings on the bottom of the leaf) help retain water.

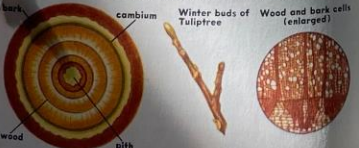
FLOWERS

All trees produce flowers of some kind. Most flowers have both male organ (stamen) and female organ (pistil). Separate male and female flowers may occur. Some flowers lack conspicuous petals. Wind or insects carry pollen from stamens to pistil. Here ovules, fertilized, develop into seeds.



TREE STEMS

The cambium is a layer of growing and dividing cells. Cells pushed outward form bark; those pushed in form wood, which enables a tree to grow large. Wood cells are long; their walls thicken and harden as they mature and die. Wood is mainly cellulose and lignin.



FRUITS

Fruits develop from the ripened ovary. They bear the seeds by which trees reproduce. Tree seeds vary greatly in size; some of the largest trees have the smallest seeds.



Tree fruits in various forms aid in the dispersal of seeds. Fleshy fruits are eaten by animals, from whose bodies the seeds may later be dropped. Winged fruits are spread by wind. "Seed trees" left after lumbering are a quick way to reforest land.



ROOTS

Roots anchor trees to the soil and absorb water and soil minerals needed for growth. Some trees have deep tap roots; others have a spreading system of roots that are more fibrous.



Roots as they push through the soil are aided by a cap that forms over the tender growing point of each root. Behind this point, myriads of root hairs extend into the soil, increasing the root's absorbing surface tremendously. The spread of a tree's root system is at least equivalent to the spread of its crown.



Meech Boakye
Parts of a Tree, 2022
archival digital print
10" x 8" unframed
edition of 3



Meech Boakye
Dogwoods, 2022
archival digital print
10" x 8" unframed
edition of 3

GREASE MAKES GLYCERINE,
AND GLYCERINE MAKES
EXPLOSIVES. FROM THAT
POINT ON IT BECOMES A
MATERIAL OF WAR.

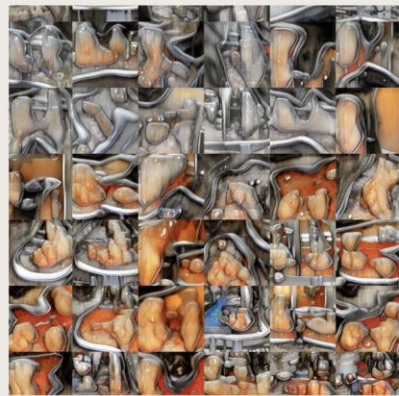
Meech Boakye
Grease Makes Glycerine, 2022
archival digital print
8" x 10" unframed
edition of 3

how to read labels,
a new fence,
an almost dried log



Meech Boakye
The Ground Cold, Hard & Baked, 2022
archival digital print
8" x 10" unframed
edition of 3

tastes of plastic and
oil, delicious,
refined to purity,



Meech Boakye
Housewife Eats Vegetable Shortening, 2022
archival digital print
8" x 10" unframed
edition of 3



Meech Boakye
Pine Resin, 2022
archival digital print
6" x 4" unframed
edition of 3



Meech Boakye
Sloppy Bondage, 2022
archival digital print
6" x 4" unframed
edition of 3



Meech Boakye
Bob made these in 1916, 2022
archival digital print
4" x 6" unframed
edition of 3